

Osteon  
medical



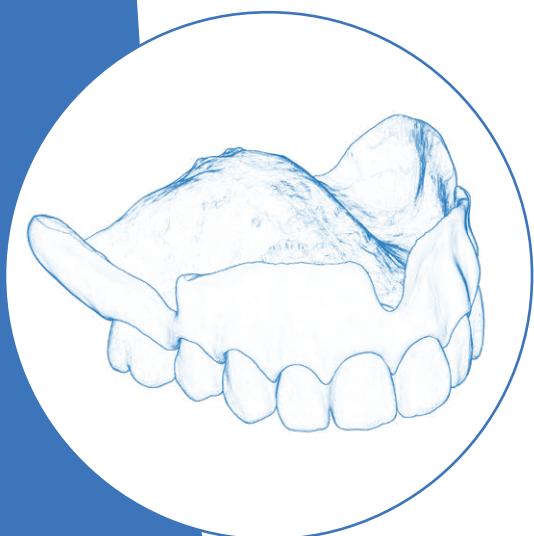
# Evolution dentures

100% Digital Denture Solution

# The Complete Digital Denture Solution

## From impression to finish in as few as 2 appointments

Evolution Dentures helps you to increase your case acceptance rate by reducing the number of appointments that would ordinarily be required to produce a set of dentures. Grow your clinic or laboratory capacity without increasing overhead costs.



### 100% Digital

Carries digital footprint so any spare or replacement dentures can be produced easily



### Monoblock Design

Available in three lifelike pink gingiva options



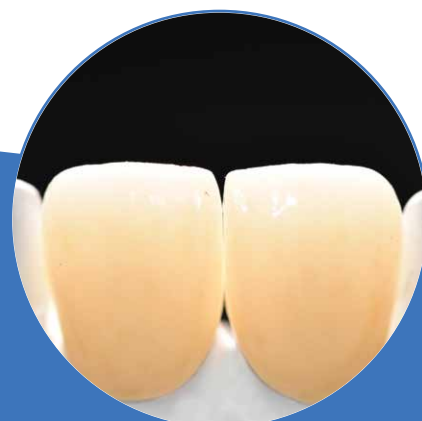
### 3D Printed Try-In

Can be produced whenever it is required



### Lifelike Tooth Materials

Lifelike, graduated translucency



# Evolution Dentures

## UNMATCHED STRENGTH.

Our specially selected approved acrylic provides unmatched strength and fit, engineered to last.



### Unsurpassed Fit

Evolution Dentures demonstrate an unsurpassed tissue fit providing excellent comfort and retention in almost any ridge profile.

# Our Process

Our process offers different approaches depending on personal preferences. Dentures can be delivered in as little as 2 visits by using our patented clinical kit. If preferred, familiar analogue techniques can be used and integrated into our digital design and manufacturing capability. Offices that are equipped with scanning facilities can send appropriate files for use in design and manufacture.

1

## Pick the method & send



Smile Tray®



1-2 appointments



Duplicate  
Dentures



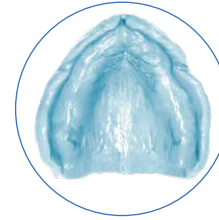
1-2 appointments



Bite Block



2 appointments



Conventional  
Impression



3 appointments

2

## Scan, Design & Approval



3

## Request optional 3D printed try-in



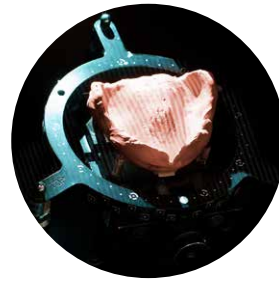
4

## Receive finished denture



## 1. Scan

Impressions are digitally scanned with the utmost accuracy



## 2. Design & Validation

Designs are performed and sent for your approval via our 3D software

## 3. Production

Once approved, files are either precision milled or 3D printed using only certified materials



## 4. Osteon Finishing

The Evolution Dentures are characterised and finished to the highest standards according to your requirements

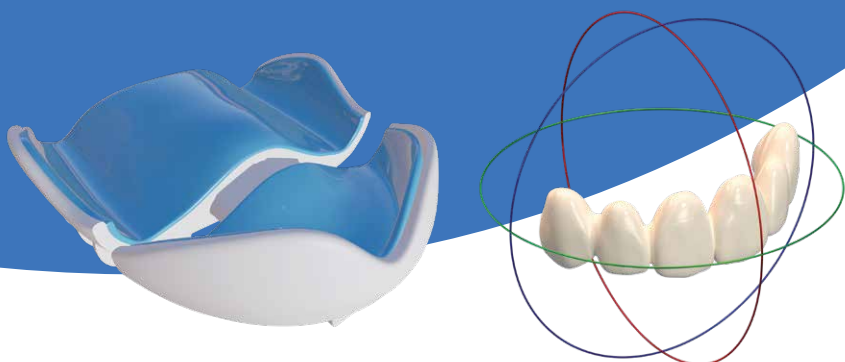
Evolution Dentures

# Smile Tray®



## Everything you need in few easy steps

Our unique, proprietary impression taking system allows you to capture both patient's soft tissue record and intended smile in your very first appointment



### 1. Impression Taking

Individually selected trays provide the ideal carrier for impressions



### 2. Occlusal Height Recording

Precision vertical occlusal height recording assisted by a locking screw mechanism



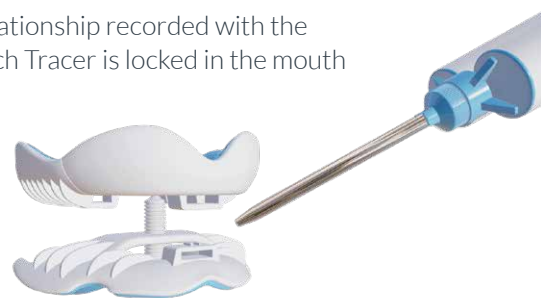
### 3. Gothic Arch Tracing

Inbuilt Gothic Arch Tracer provides positive jaw relation recording



### 4. Bite Registration

Jaw relationship recorded with the Gothic Arch Tracer is locked in the mouth



### 5. Tooth Position

The Smile Tray® allows positioning of the anterior teeth in the mouth



# Meet our wide range of tooth and gingiva shades



## Osteon Warranty

We've got you covered!

1 year on all Evolution Dentures



Osteon's Evolution Dentures are free from any defects and produced from only certified materials. All denture products are backed by a comprehensive warranty and furthermore, digital files are stored for 10 years so in the event you require a new set, this can be produced using existing files for upgrades or repair requirements.



